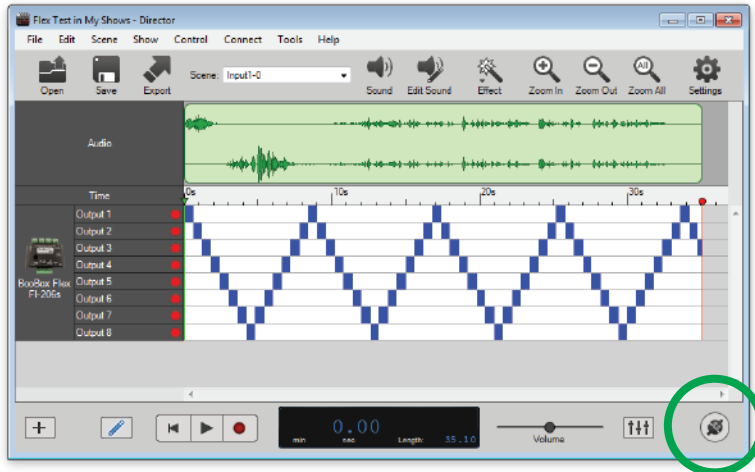


4

Launch Director and click Connect

Director can be downloaded for free at [www.frightideas.com/director](http://www.frightideas.com/director)



After clicking Connect, the button should glow blue indicating "real-time" mode has been enabled.



**Thank's for Purchasing  
a Director Connect!**

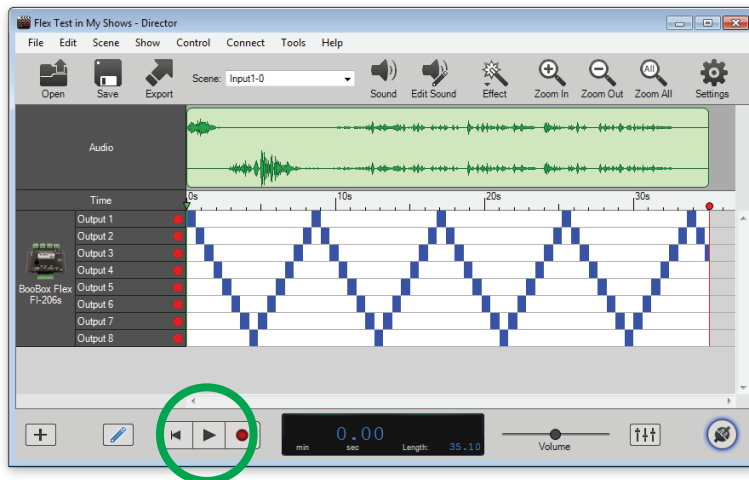
Follow the steps inside to get started

[www.frightideas.com](http://www.frightideas.com)

5

Press Play

Your scene will start playing on the BooBox.



1

Connect the USB Cable

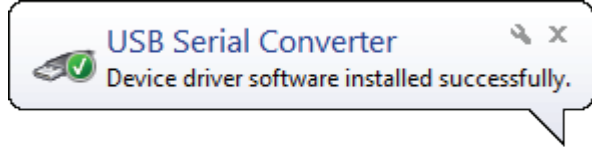
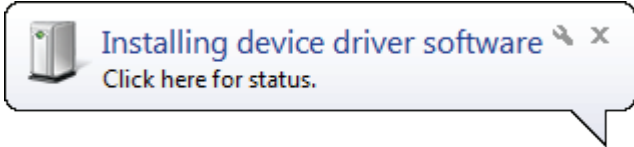


# 2a

## Driver Install - Windows 7,10

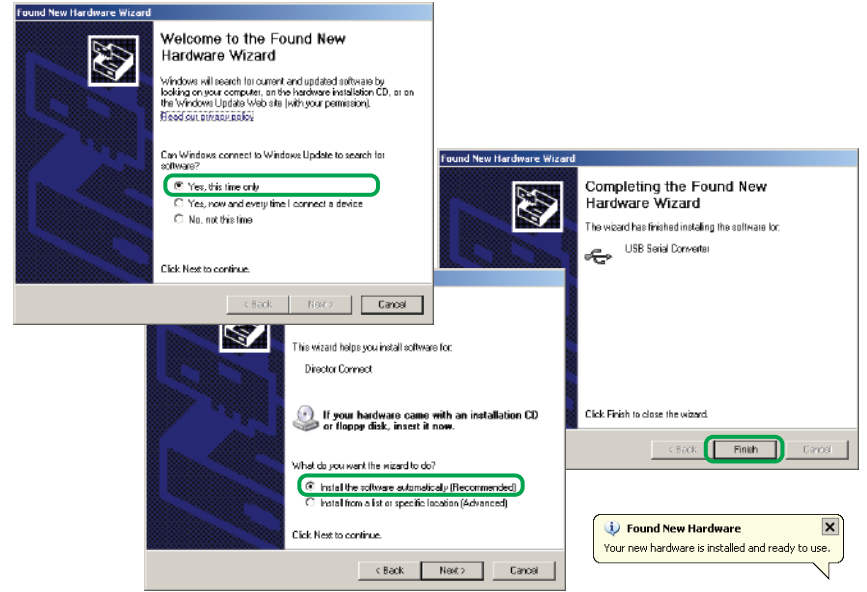
Continue to 2b or 2c for Windows Vista or XP.

Windows 7 should automatically connect to Windows Update and download the driver. If it doesn't, select the option to search Windows Update for the driver.



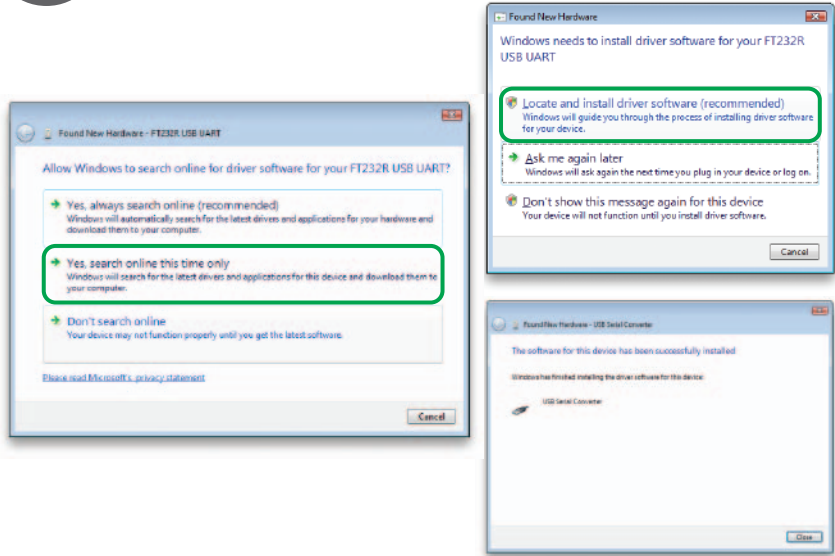
# 2c

## Driver Install - Windows XP



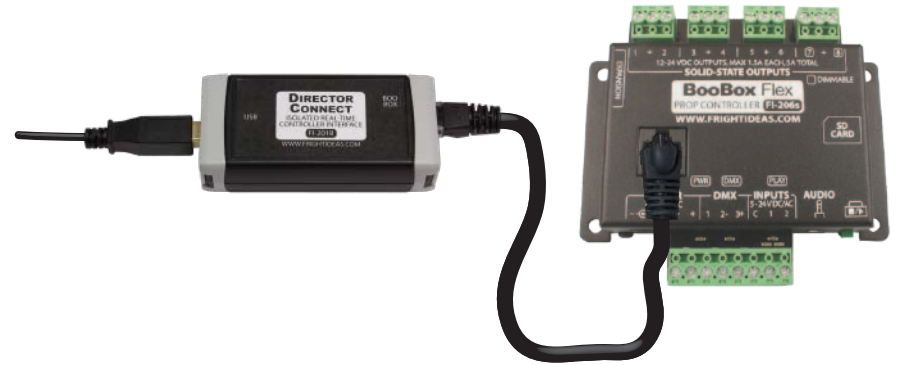
# 2b

## Driver Install - Windows Vista



# 3

## Connect To Controller



(The BooBox must also be connected to its power supply)